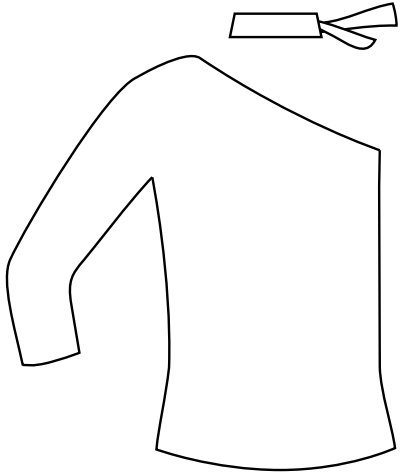
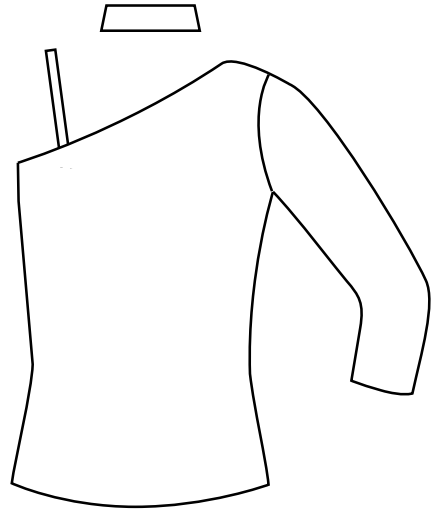


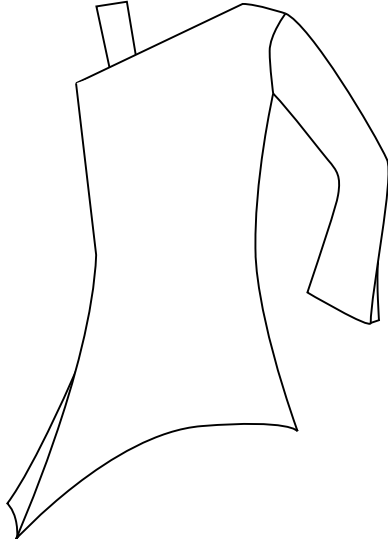
T059



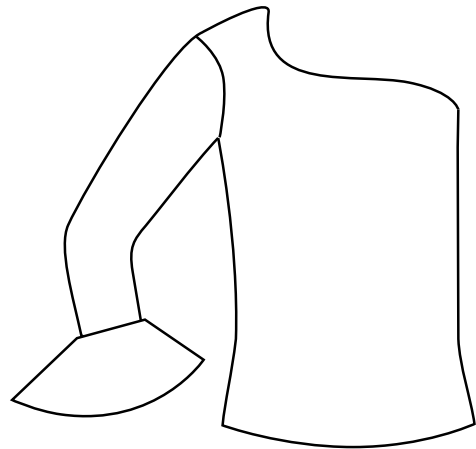
T060



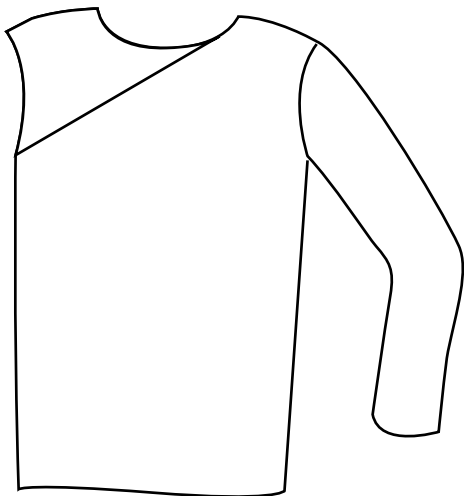
T075



T086



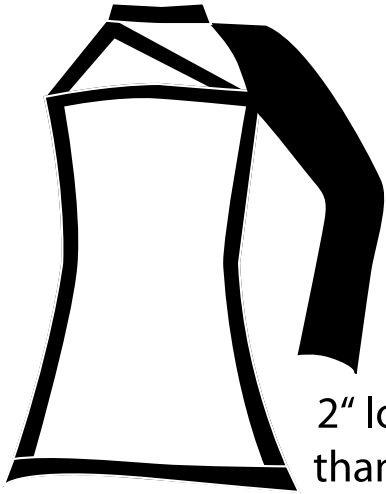
T091



T105

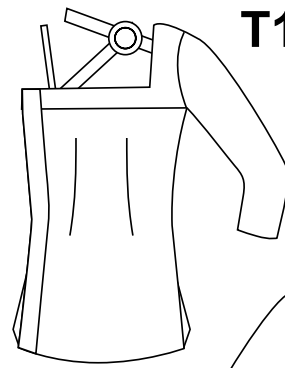


T105A

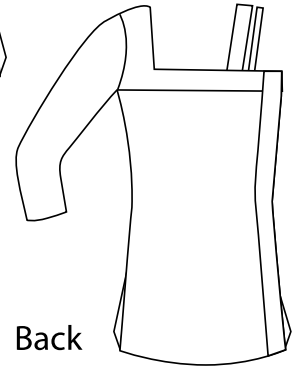


2" longer
than T105

T113

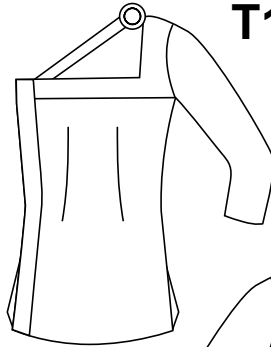


Front

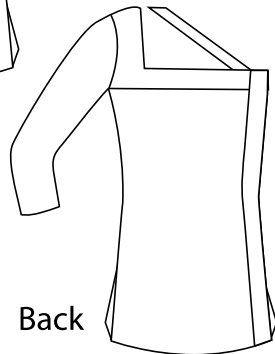


Back

T113A

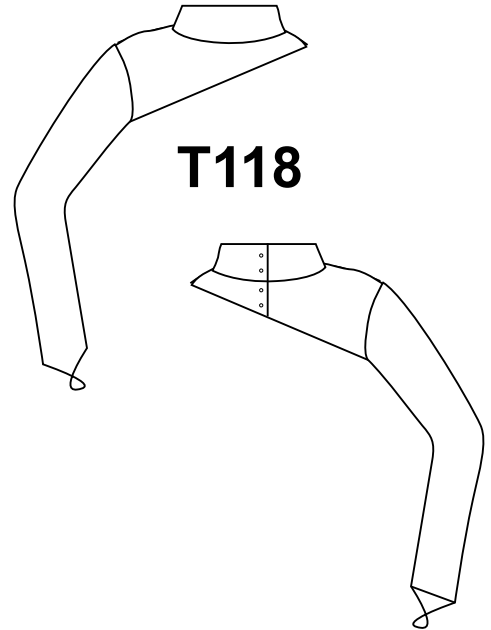


Front



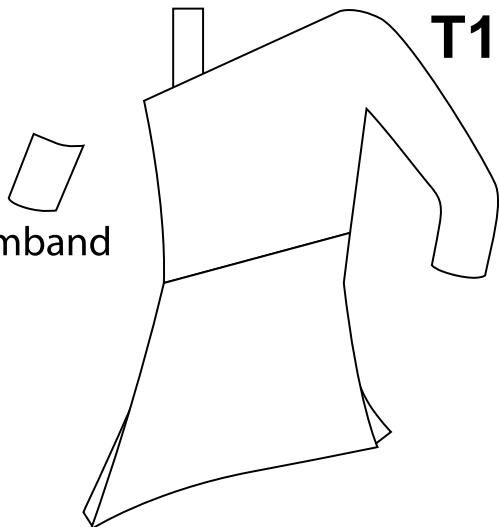
Back

T118



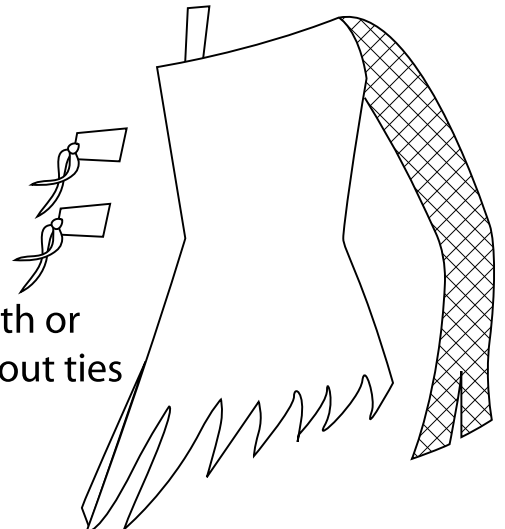
Armband

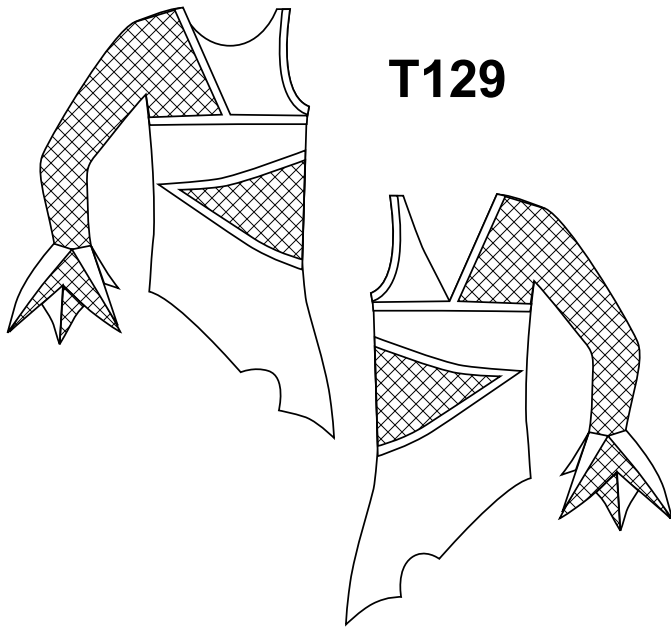
T119



T121

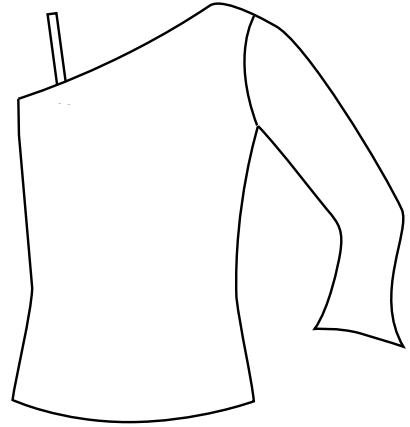
With or
without ties



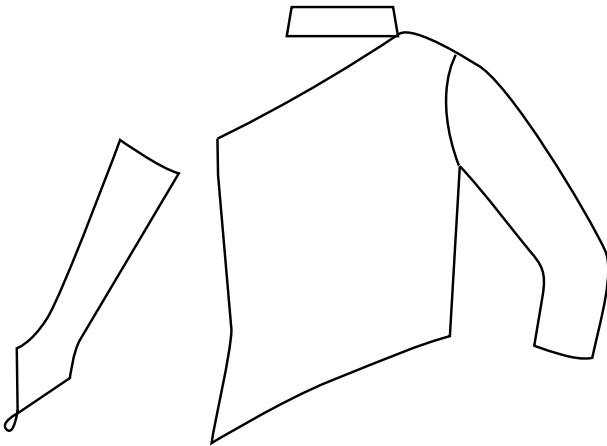


T129

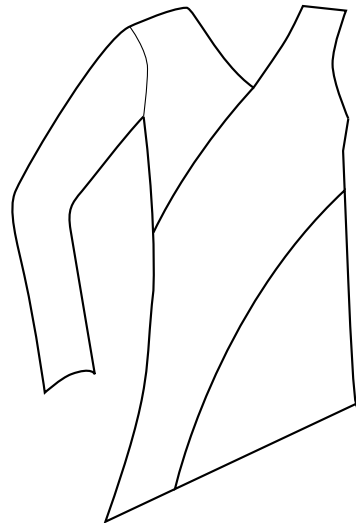
T138



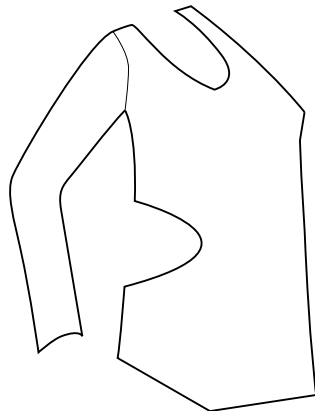
T139



T146



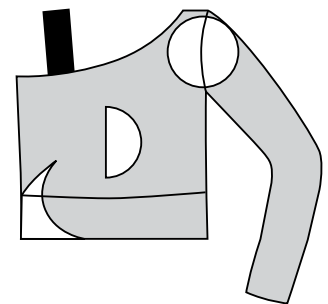
T147



**Front and
Back the Same**

T180

Front and back the same



This top is longer than a bra top but shorter than our regular tops. The side seam length is 8 1/2" long.